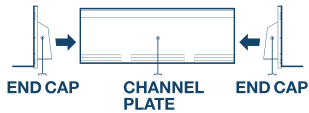
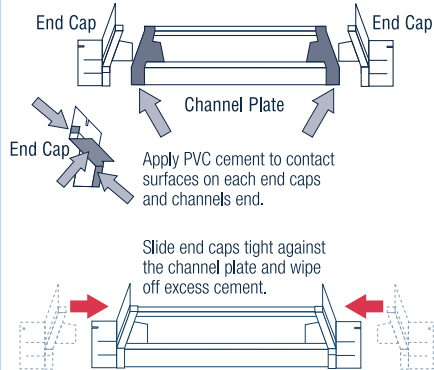


DOOR INSTALLATION OF SURESILL SILL PAN

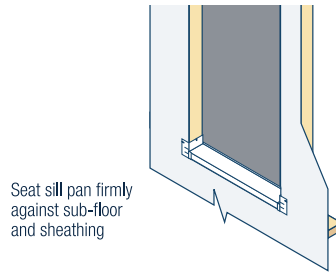
DETAILS



1 Measure the bottom of the rough opening then cut the channel plate 1/4" shorter than the measured opening. Assemble end caps and check fit in rough opening before gluing end caps in place. Assembled pan should be flush with rough opening.



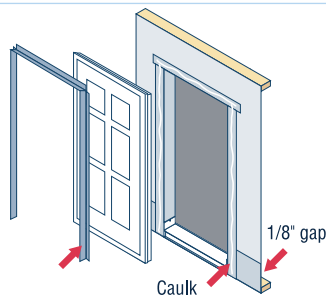
3 Install assembled SureSill™ into rough opening and shim, if needed. Fasten to rough opening using slots provided in end caps.



IMPORTANT: Fasten to rough opening through slots provided



5 Apply sealant/caulk to exterior face of studs and header, then install and secure door. Install flashing along jambs/brick mould and head.

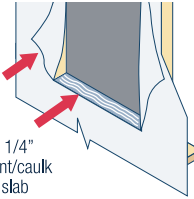


IMPORTANT: Allow 1/8" gap behind window or door threshold



2 Opening with housewrap:

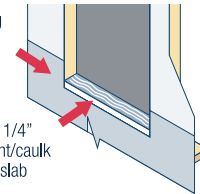
Peel back housewrap at bottom of each corner



Apply (3) three 1/4" beads of sealant/caulk to sub-floor or slab

Opening without housewrap:

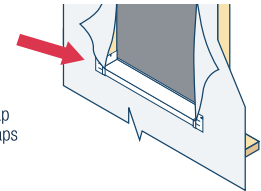
Install waterproofing material across opening, 6" above sub-floor or slab



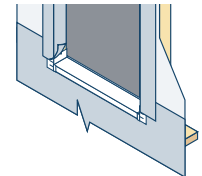
Apply (3) three 1/4" beads of sealant/caulk to sub-floor or slab

4 Opening with housewrap:

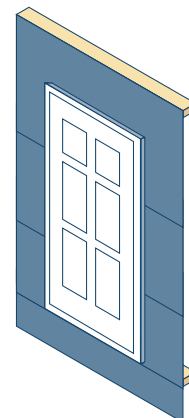
Repositions and secure housewrap to overlap end caps



Opening without housewrap:



6 Install waterproofing in shingle fashion, including over jamb and head flashing. PROVIDE FREE DRAINAGE FOR SURESILL™.



For more information
or to order SureSill
contact:

Endura Products, Inc.
8817 W. Market Street
Colfax, NC 27235
800.334.2006